



# Cripto-3 Polyclonal Antibody

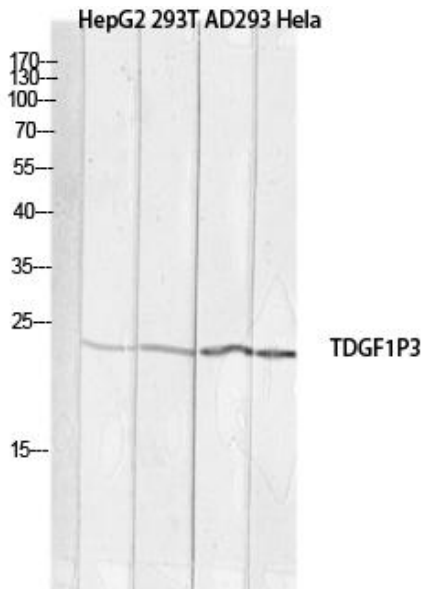
<b>Catalog No</b>	YP-Ab-16074
<b>Isotype</b>	IgG
<b>Reactivity</b>	Human;Rat;Mouse;
<b>Applications</b>	WB;ELISA
<b>Gene Name</b>	TDGF1P3
<b>Protein Name</b>	Putative teratocarcinoma-derived growth factor 3
<b>Immunogen</b>	The antiserum was produced against synthesized peptide derived from the Internal region of human TDGF1P3. AA range:1-50
<b>Specificity</b>	Cripto-3 Polyclonal Antibody detects endogenous levels of Cripto-3 protein.
<b>Formulation</b>	Liquid in PBS containing 50% glycerol, 0.5% BSA and 0.02% sodium azide.
<b>Source</b>	Polyclonal, Rabbit,IgG
<b>Purification</b>	The antibody was affinity-purified from rabbit antiserum by affinity-chromatography using epitope-specific immunogen.
<b>Dilution</b>	Western Blot: 1/500 - 1/2000. ELISA: 1/10000. Not yet tested in other applications.
<b>Concentration</b>	1 mg/ml
<b>Purity</b>	≥90%
<b>Storage Stability</b>	-20°C/1 year
<b>Synonyms</b>	TDGF1P3; CRIPTO3; TDGF2; TDGF3; Putative teratocarcinoma-derived growth factor 3; Cripto-3 growth factor; Epidermal growth factor-like cripto protein CR3; Teratocarcinoma-derived growth factor 1 pseudogene 3
<b>Observed Band</b>	21kD
<b>Cell Pathway</b>	Cell membrane .
<b>Tissue Specificity</b>	Expressed weakly in lung, colon and breast. Expressed also strongly in primary cancer tissues; lung and colon cancers.
<b>Function</b>	function:Could play a role in the determination of the epiblastic cells that subsequently give rise to the mesoderm.,similarity:Contains 1 EGF-like domain.,tissue specificity:Preferentially expressed in gastric and colorectal carcinomas than in their normal counterparts.,
<b>Background</b>	The TDGF3 locus has characteristics of a retrotransposon, including lack of introns and a poly(A) sequence. [provided by RefSeq, Jul 2008],
<b>matters needing attention</b>	Avoid repeated freezing and thawing!



### Usage suggestions

This product can be used in immunological reaction related experiments. For more information, please consult technical personnel.

## Products Images



Western blot analysis of HepG2 293T AD293 HeLa lysis using TDGF1P3 antibody. Antibody was diluted at 1:1000. Secondary antibody(catalog#:RS0002) was diluted at 1:20000